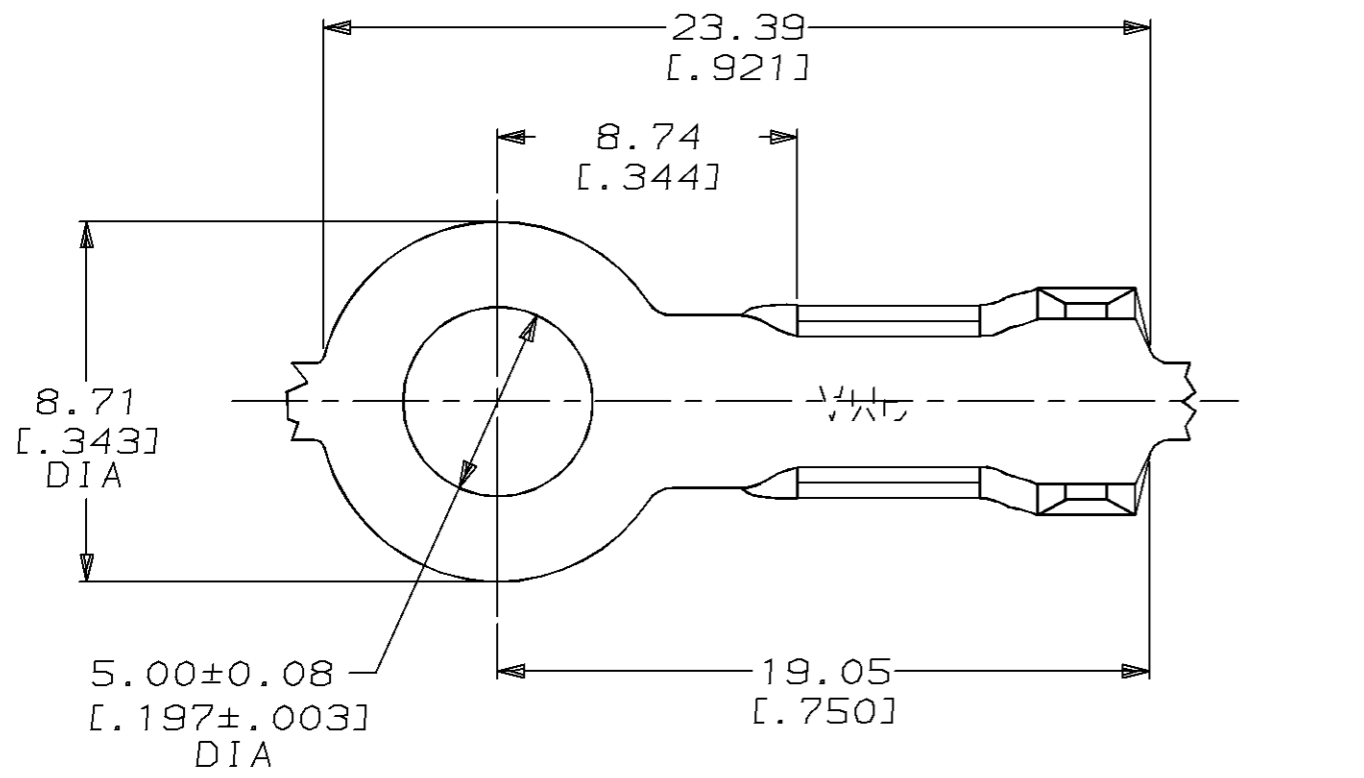
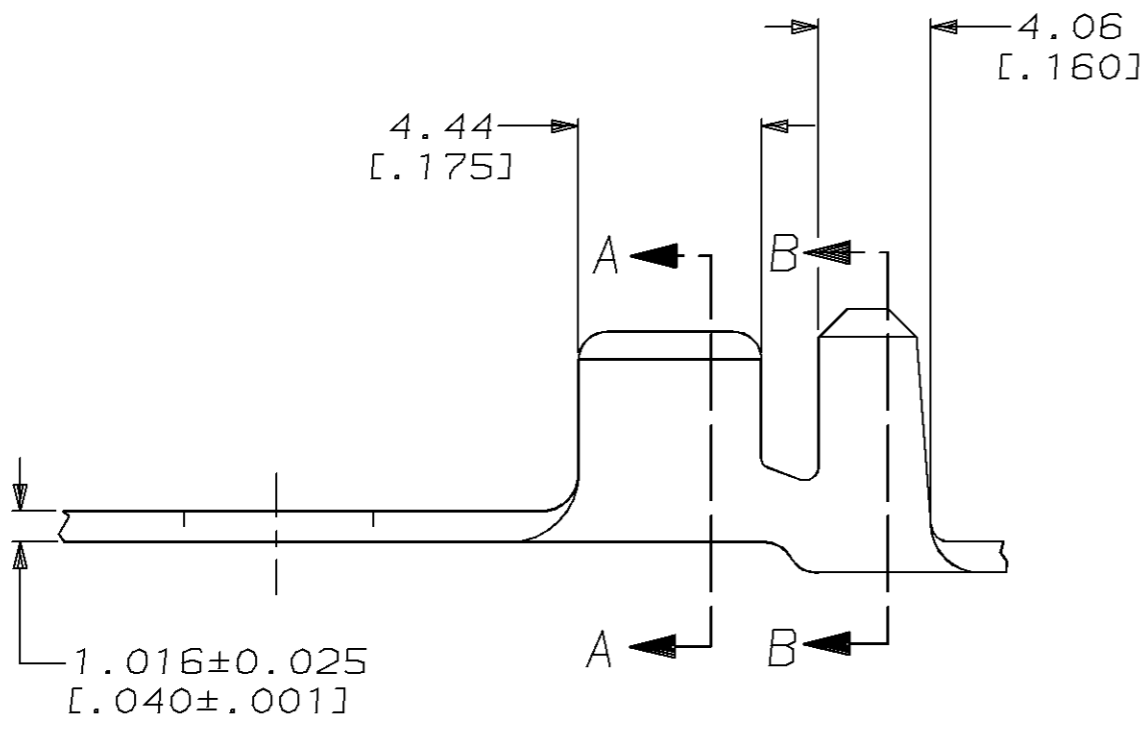
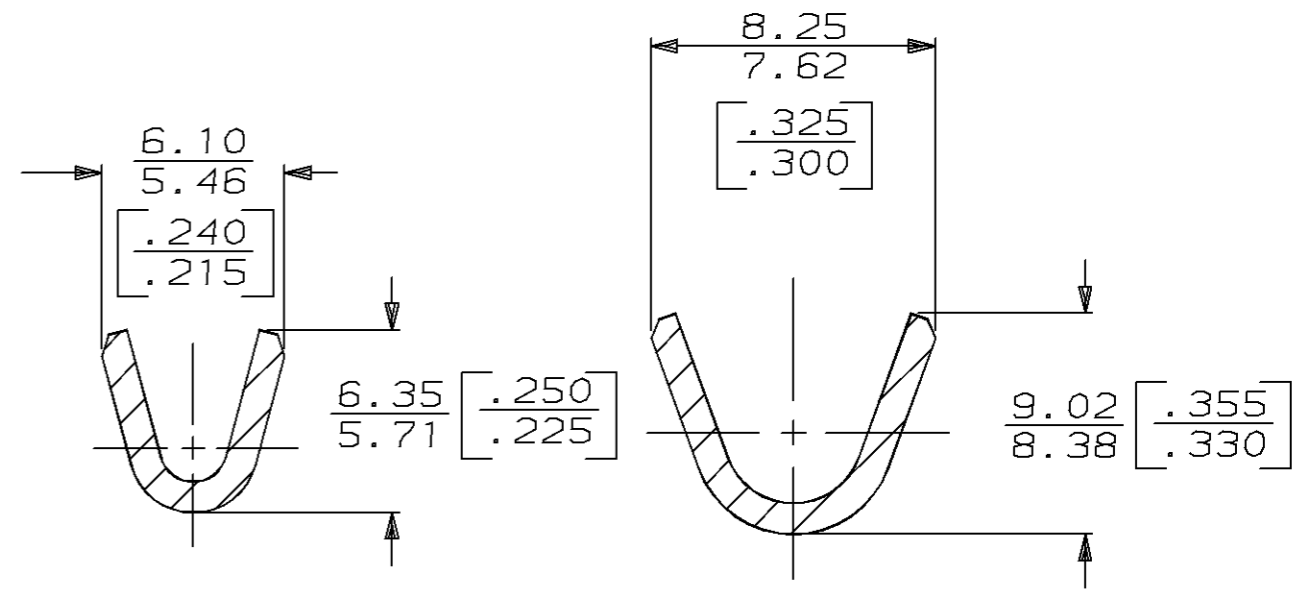


THIS DRAWING IS UNPUBLISHED. RELEASED FOR PUBLICATION, 19 .  
 © COPYRIGHT 19 BY AMP INCORPORATED. ALL INTERNATIONAL RIGHTS RESERVED.

LOC	DIST	P	F	REVISIONS				
				ZONE	LTR	DESCRIPTION	DATE	APPD
AF	50				H	REV & REDRAWN PER 0710-0267-95	27/JUN/95	PF/GY



- 1 CONTINUOUS STRIP ON REEL.
- 2 0.002032 [.000080] MIN TIN PL PER MIL-T-10727.



$\triangle$ 2 4.32-5.33 DIA [.170-.210]	INSULATION RANGE	[12-10] AWG	42864-2
		WIRE RANGE	42864-1
DO NOT SCALE PRINT. UNLESS SPECIFIED DIMENSIONS IN mm [INCHES] TOLERANCES ON: 2 PLC DEC ± 0.38 [.015] 3 PLC DEC ± - ANGLES ± -		DR 27/JUN/95 PHILLIP M FORTNEY CHK 27/JUN/95 JEFF R RUTH APPD 27/JUN/95 GARY YETTER APPD 27/JUN/95 MARK BARNABA PRODUCT SPEC - APPLICATION SPEC - WEIGHT -	
MATERIAL 082 BRASS		<b>AMP</b> AMP Incorporated Harrisburg, PA 17105-3608 NAME RING	
FINISH SEE TABLE		SIZE B	CAGE CODE 00779
		SCALE 5:1	DRAWING NO C-42864
			SHEET 1 OF 1

THIS DRAWING IS A CONTROLLED DOCUMENT FOR AMP INCORPORATED. IT IS SUBJECT TO CHANGE AND THE CONTROLLING ENGINEERING ORGANIZATION SHOULD BE CONTACTED FOR THE LATEST REVISION.